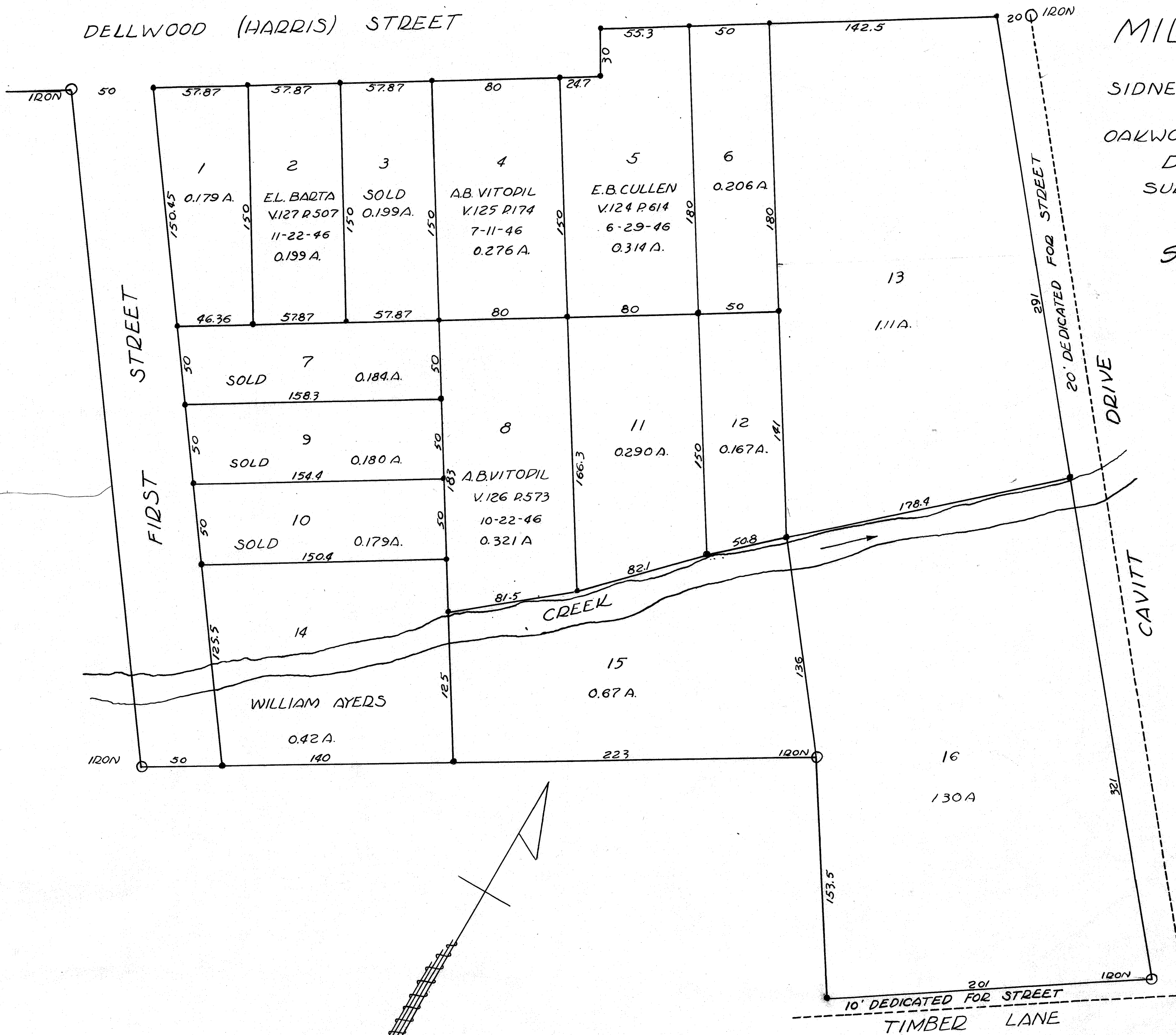


DELLWOOD (HARRIS) STREET



MILTREE PLACE  
 PURCHASED BY  
 SIDNEY L. & JANET M. LOVELESS  
 FROM  
 OAKWOOD REALTY COMPANY  
 D/R 106 D. 369  
 SURVEYED BY J.A. ORR  
 SCALE 1"=50'

Subdivision Plat  
 D/R 129 Pg. 395

on base  
 612 61

237